

TRATTATO II. DEL BALLARINO.

desimo torneranno à fare per contrario, cioè un Trabuchetto alla destra, dando una battuta alla sinistra, con due Continenze, una alla sinistra, e l'altra alla destra: poi pigliandosi la Fè destra, faranno insieme la Ruerenza graue.

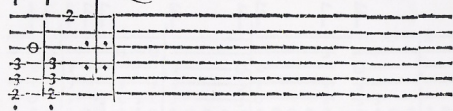
Alla sciolta della Sonata in Gagliarda.

Lasciando la Fede, faranno quattro Seguiti ordinarij fiancheggiati in dietro, insieme con le volte del Ballo, detto il Contrapasso: finalmente faranno insieme quattro Pasi graui innanzi: poi l'uomo pigliando la Dama per la man'ordinaria, la poserà in capo alla Sala, o doue più le tornerà comodo, e finiranno il Ballo col far insieme la Ruerenza graue.

Intaolatura di Liuto, del Balletto Barriera.



Questo farafsi sette volte.



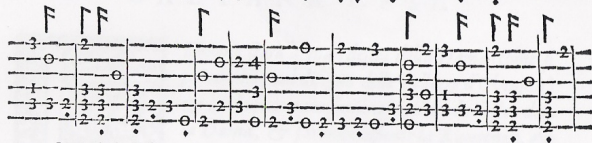
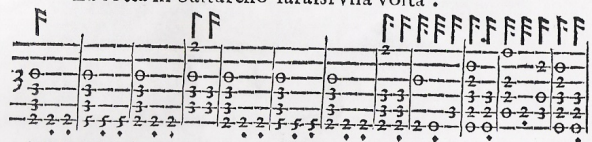
La

La rotta graue farafsi due volte.



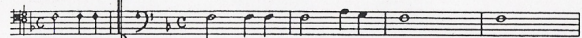
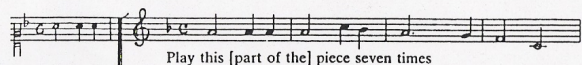
La

La rotta in Saltarello farasi vna volta .

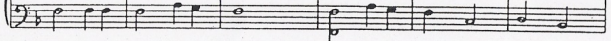
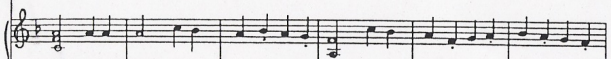
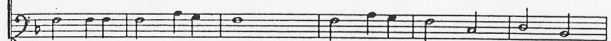
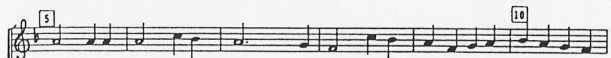
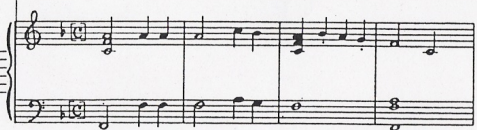
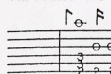


La rotta in Gagliarda





7th course = F



Measures 15-20 of the musical score for page 186. The score is written for three staves: a single treble staff at the top, and a grand staff (treble and bass) below it. Measure 15 is marked with a box containing the number 15. Measure 20 is marked with a box containing the number 20. The music is in a key with one flat (B-flat) and a 2/4 time signature.

Measures 25-30 of the musical score for page 187. The score is written for three staves: a single treble staff at the top, and a grand staff (treble and bass) below it. Measure 25 is marked with a box containing the number 25 and the text "[Grave sciolta]". Below measure 25, the instruction "Play twice" is written. Measure 29 is marked with a box containing the number 29. Measure 30 is marked with a box containing the number 30. The music is in a key with one flat (B-flat) and a 2/4 time signature.

35 ③ 44

④ ⑤

45 54

⑥

This page contains two systems of musical notation. The first system covers measures 35 to 44, with measure numbers 35, 40, and 44 marked above the staff. A circled number 3 is above measure 35. The second system covers measures 45 to 54, with measure numbers 45, 50, and 54 marked above the staff. Circled numbers 4 and 5 are above measures 47 and 51 respectively, and a circled number 6 is above measure 53. The notation includes treble and bass staves with various musical symbols such as notes, rests, and bar lines.

[Saltarello] 58

Play once

55 64

This page contains two systems of musical notation. The first system covers measures 55 to 64, with measure numbers 58 and 64 marked above the staff. The text "[Saltarello]" and "Play once" is written above the staff at measure 58. The second system covers measures 65 to 74, with measure numbers 65 and 74 marked above the staff. The notation includes treble and bass staves with various musical symbols such as notes, rests, and bar lines.

Musical score for page 190, measures 65-70. The score is written for piano in 3/4 time, featuring a treble and bass staff. Measure 65 is marked with a box containing the number 65. Measures 66-67 contain a first ending marked with a circled 7. Measures 68-69 contain a second ending marked with a circled 9. Measure 70 is marked with a box containing the number 10.

Musical score for page 191, measures 71-76. The score is written for piano in 3/4 time, featuring a treble and bass staff. Measure 71 is marked with a box containing the number 71 and the word "Galliard" above the staff. Measures 72-73 contain a first ending marked with a circled 9. Measure 74 is marked with a box containing the number 80. Measures 75-76 contain a second ending marked with a circled 11 and a circled 12.

Musical score for "BARRIERA" (Op. 8, No. 8). The score is written for voice and piano. It consists of three systems of staves. The first system has a vocal line (treble clef) and a piano accompaniment (bass clef). The second system has a vocal line (treble clef) and a piano accompaniment (bass clef). The third system has a vocal line (treble clef) and a piano accompaniment (bass clef). The key signature is one flat (B-flat). The tempo is marked "Allegretto". The score includes measure numbers 85, 90, and 95. The piano part features a prominent bass line with eighth and sixteenth notes, and a treble part with chords and moving lines. The vocal part consists of a single melodic line.

85 90 95